

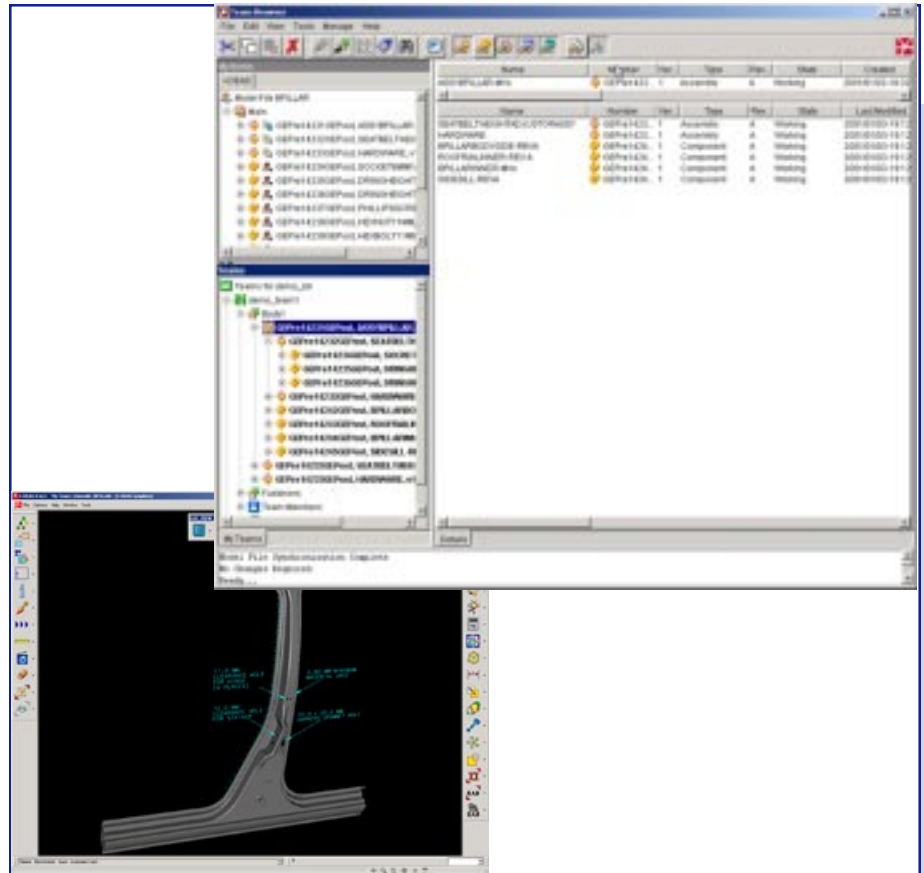
I-DEAS® Enterprise™ is an enterprise-wide design data management solution, created specifically to accommodate product development teams that cross over discipline, geographic, and company boundaries. By building on elements of both I-DEAS and Metaphase® technologies, I-DEAS Enterprise is able to provide virtually unlimited scalability in terms of the number of users, amount of data, and geographic distribution.

I-DEAS Enterprise also provides an integrated, windows UI called Team Browser, for both the administrator and end user. This overall ease-of-use allows for easy out-of-the-box integration with existing desktop environments.

Unified Environment

While competitive alternatives provide interface solutions between separate Mechanical Design Automation (MDA) and Product Knowledge Management (PKM) environments, I-DEAS Enterprise provides a unified environment, significant in many ways.

- I-DEAS Enterprise provides a consistent user interface for all users, including the data author, the data viewer, the PKM user, and the administrator. Therefore, individuals may wear many hats, and administrative tasks may be done by one or many individuals.
- I-DEAS Enterprise requires only a single-step data check-in of MDA data in order to share the data with the extended enterprise (based on access privileges of course). This model ensures integrity of data being shared across the enterprise, as compared with competitive alternatives, which require multiple data transfer steps, increasing the likelihood that the wrong data is being shared.
- The I-DEAS Enterprise unified environment means that MDA data management is truly integrated with your PKM environment. This environment allows you to leverage the true value from PKM by linking CAD/CAM/CAE data with supporting product information and processes, and making it available to all users in a consistent manner.



The I-DEAS Enterprise Team Browser UI provides a seamless integration with I-DEAS as well as with the rest of your existing desktop environment.

Desktop Integration

Team Browser is the I-DEAS Enterprise windows-style user interface. This Java-based interface provides consistent access to all users, including full-time I-DEAS users, casual data browsers, and data or system administrators.

Team Browser provides simultaneous access to data that resides in an I-DEAS Model File, as well as team locations based on defined access privileges.

- The 'Model File' space within Team Browser provides direct access to and manipulation of I-DEAS model file bin information.
- The 'Team' space within Team Browser provides access to hierarchical Team information, including item versions and check-out/reference status.
- Additional fields within Team Browser provide access to detailed item information as well as querying relationships between items.

Additionally, queries can be done for items residing across the enterprise, including released design data.

I-DEAS Enterprise 'Teams'

I-DEAS Enterprise introduces a new 'Team' concept, where teams represent logical collections of people who need to collaborate based on ownership rules and business processes, as opposed to physical location.

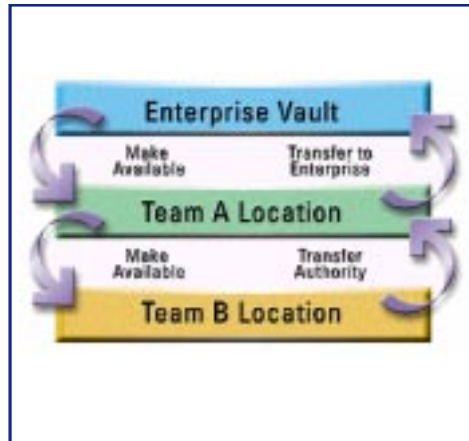
Logical team data locations are defined to represent data created and owned by each team. Based on both team-level and individual-level ownership roles, design information can then be shared seamlessly across the enterprise, both within and across defined teams.

Design data can later be 'released' into enterprise-level vaults. Team data and enterprise data may or may not reside in the same physical location. When physical data locations are the same, there is no performance implication of the release event.

Scalability

To support the needs of your globally distributed design teams, I-DEAS Enterprise provides virtually unlimited scalability in terms of:

- **Geographical Distribution.** Because I-DEAS Enterprise is built on a distributed data model, teams may be defined independent of physical location. People who sit in different parts of the world may be members of a single team and may trade data seamlessly as if they were sitting next to one another in the same building.
- **Number of Users.** I-DEAS Enterprise does not impose any limits on the number of users who can belong to a defined team, the number of physical locations which are tied together globally, or to the number of teams defined across the entire installation.
- **Amount of Data.** Data limits are imposed only by your physical system capacity.



Role-based Data Access

I-DEAS Enterprise data security is based on team role definitions. There are seven out-of-the-box roles, which can be modified; or new roles can be defined. The team roles are established such that there is minimal overlap between role privileges. Therefore a single user will often take on multiple roles, and may be a member of multiple teams.

- The **Team Leader** performs team maintenance tasks, such as creating teams, setting member roles, and adding or deleting team members.
- The **Team Author** is a data creator, with access to check data in and out, modify data, delete data, and move data within the team.
- The **Team Viewer** is a data viewer, with access to query, get info, and view team data.
- The **Team Sharer** grants users of other teams access to his team's data, which can be done either on a 'pass-through' or explicit basis. On a 'pass-through' basis, users take on the same roles they have in their 'home' team, and the Team Sharer has the ability to block out specific roles such as Team Leader and Team Sharer from the 'remote' team.

- The **Team Releaser** is responsible for releasing data from a team location to the enterprise.
- The **Team Security Grantor** has access to delete check-out locks.
- The **Team Exporter** role is used to push data across enterprise installations in a federated environment.

Installation and Administration

I-DEAS Enterprise installation and administration tasks are extremely streamlined. Administrative roles can be partitioned such that different tasks can be assigned to different people, and roles can easily be temporarily reassigned in whole or in part when individuals are out on vacation or otherwise unavailable. Administrative tasks are handled through the easy-to-use Team Browser.

Hardware

Server Platforms

HP-UX 11
Microsoft Windows NT
Sun Server Solaris 2.6, 2.7, 2.8

Client Platforms

HP-UX 11
SGI IRIX 6.5.2, 6.5.5
Sun Solaris 2.6, 2.7, 2.8
Microsoft Windows NT 4.0 SP 5
Microsoft Windows 2000

Prerequisites

Core Master Modeler
-or-
I-DEAS Product Design Package
-or-
I-DEAS Artisan™ Package

For More Information

For more information, contact your local SDRC representative, or call 1-800-848-8372.