

I-DEAS® Web Access makes viewing parts, assemblies, and drawings created in I-DEAS as simple and informative as surfing the web. It links others to I-DEAS through a company's web intranet.

With I-DEAS Web Access, it's easy to communicate with:

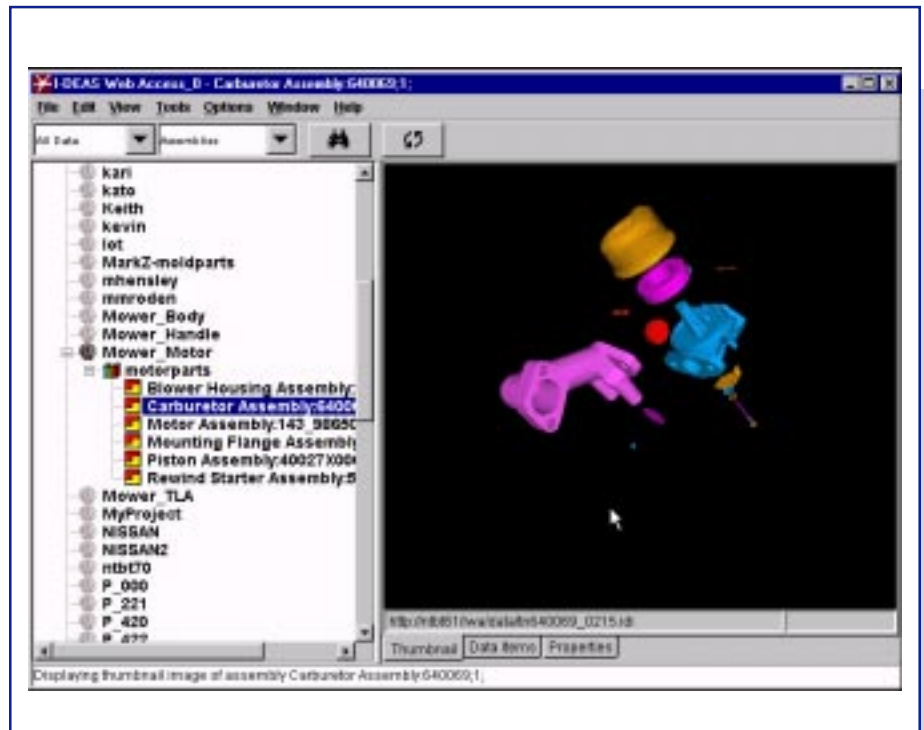
- marketing and management
- suppliers and partners
- sales and distribution
- manufacturing and testing
- training and support

And they don't even need to know how to use I-DEAS.

## Navigation

The intuitive interface allows your engineering team to communicate on a project with others who need information about the project. The interface includes:

- A menu bar with commands for viewing and modifying data.
- A tool bar that controls how items are listed in the directory area.
- A directory area that lists the projects, libraries, parts, assemblies, and drawings you can select from.
- A contents window that displays more information about what you selected in the directory area.
- Tabs you can use to choose the type of information to view for an item, such as images or properties. You can also attach files or link web pages.
- Thumbnails that show a small VRML image of the part or assembly you selected to display.



The I-DEAS Web Access interface makes it easy to view I-DEAS data.

## Collaboration

I-DEAS Web Access makes it easy for team members and others to:

- Find I-DEAS drawings, parts and assemblies in libraries.
- Find I-DEAS Team Data Manager™ product attributes.
- Control access to items.
- View parts, assemblies, and drawings.
- View the properties for an item.
- Link files and web pages to I-DEAS parts and assemblies.

All data and geometry across multiple I-DEAS installations is gathered and converted to a format understood by the browser.

I-DEAS Web Access supports a direct link for file formats, so everyone can begin working right away with the information they need.

Reviewers can make suggestions to part designs or add a Bill of Materials by linking files and web pages to the parts. And, because the data comes directly from I-DEAS, revisions can be tracked as soon as the changed parts are checked back into their libraries.

I-DEAS Web Access can generate and display images on the fly, or display images that have been automatically generated during check-in of a part or assembly.

And, in addition to supporting various VRML viewers, I-DEAS Web Access enables SDRC's I-DEAS Solutions Network<sup>SM</sup> partners to develop other visualization applications that directly access your I-DEAS Team Data Manager installation.

All this ensures that the most up-to-date engineering information is distributed to everyone who needs it.

Note: For more information on supported collaboration offerings available separately from these partners, please see the I-DEAS Solutions Network collaboration and visualization listing at: [www.SDRC.com/solutions-partners](http://www.SDRC.com/solutions-partners).

### **Security**

Just because I-DEAS projects are available from the web doesn't mean just anyone can see them.

I-DEAS Web Access provides security for confidential products. Once in I-DEAS Web Access, the administrator can control what people can see and do to a project. So, while one person may have access to a project or a part, others might not.

### **Prerequisite**

None

### **For More Information**

For more information, contact your local SDRC representative or call 1-800-848-7372.