

## International Standard Fasteners

I-DEAS® Standard Parts Catalog software is a collection of detailed solid models designed to eliminate the repetitious recreation of international standard parts. The catalog includes thousands of nuts, bolts, washers, screws, and rivets, and supports various international standards including ANSI, ISO, and JIS. The catalog helps you rapidly create completely detailed assemblies without having to recreate commonly used standard parts. The use of interchangeable and easily accessible standard components gives you more time for the truly creative aspects of product design. Standard parts can be retrieved from the catalog at any time to aid in the design process. The availability of commonly used fasteners encourages you to use standard parts.

## User Interaction

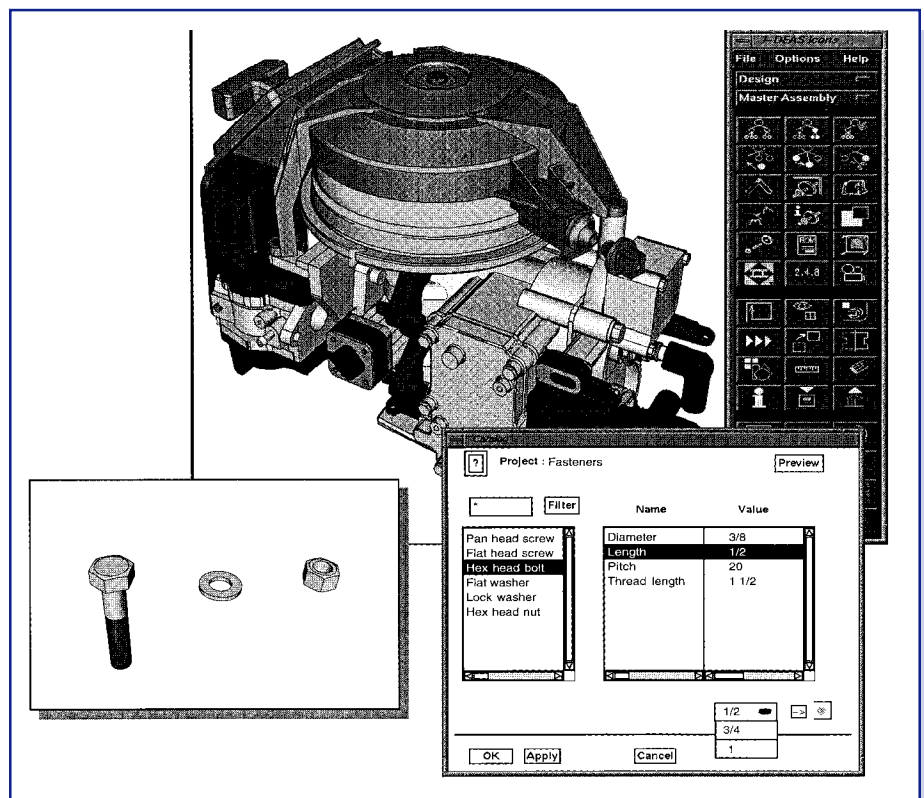
The catalog is accessed through an intelligent table-driven user interface which guides you through part selection. Parts are chosen by selecting key part attributes such as head type, diameter, and length from a table of available options. The Part Previewer icon can be selected to give you a graphical description of the selected type of fastener to enable you to verify the selected part. The part is automatically created once a unique fastener has been selected. User interaction features include:

- Table-driven part selection provides intelligent guidance to help you find specific parts to meet your design requirements.
- The graphical parts previewer feature helps you confirm part selection by showing a detailed drawing of the part and the table of available sizes.
- Unique part names allow you to quickly retrieve frequently used fasteners by simply entering the specific part name.

## Fastener Attributes

Each fastener has been precisely modeled with full dimensional detail. Threads have been simplified to enhance the performance for large assemblies. Reference geometry on the fasteners helps with part positioning within the assembly context. User-defined attributes such as surface finish, cost, and thread pitch can be added to each fastener. Part attributes include:

- Reference geometry on the parts simplifies part positioning and can be used to relate parts within the assembly.
- Suppressible features allow you to further simplify the parts to reduce the complexity of extremely large assemblies.
- User-defined part attributes allow you to add information to the parts to meet company-specific standards.



The intelligent table-driven user interface allows you to select parts much like you would from your manufacturing handbook or catalog.

## Entity Support

The catalog supports more than 125 different types of the most commonly used fasteners from the ANSI, ISO, and JIS standards including nuts, bolts, washers, lock washers, socket head, shoulder and cap screws, machine screws and nuts, slotted head cap screws, square head set screws, slotted headless set screws, keys, pins, tapping screws, rivets, and large rivets.

## Customization

The catalog can be tailored and expanded to meet site-specific requirements. If used with I-DEAS Team Data Manager™ software, project or team leaders can control user access to the catalog.

- Family of parts capabilities allows you to make company-specific families of parts which can be added to the catalog.
- Part customization allows you to take existing parts and modify their parameters and attributes to meet site-specific needs.

## Prerequisite

Core Master Modeler

-or-

I-DEAS Product Design Package

-or-

I-DEAS Artisan™ Package

## For More Information

For more information, contact your local SDRC representative or call 1-800-848-7372.