

I-DEAS® Viewer

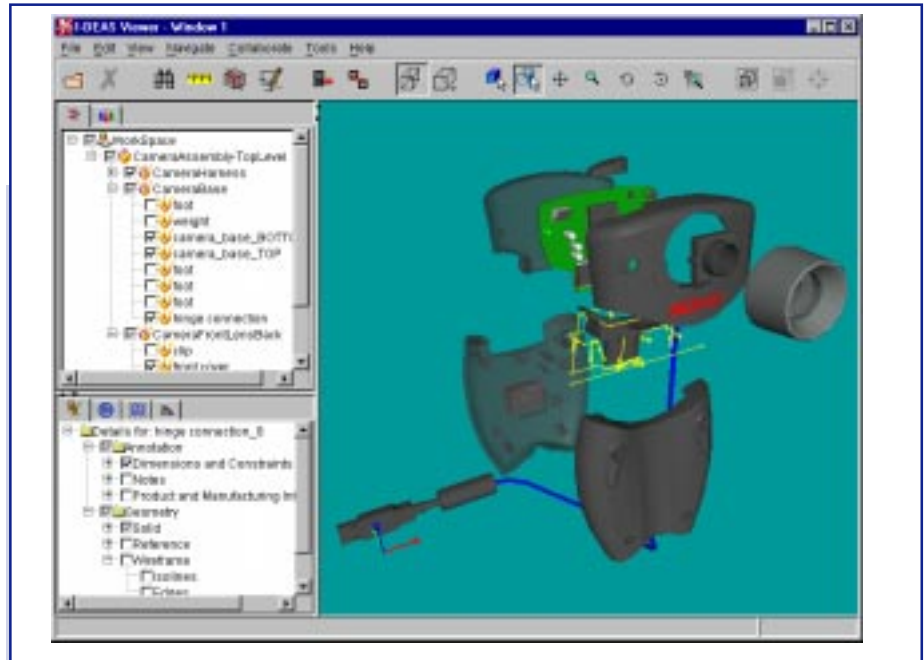
The I-DEAS model-centric documentation process products document and communicate 3D models to the extended enterprise. I-DEAS Master Notation™ provides tools to document parts and assemblies, and to organize that documentation. I-DEAS Web Access provides secure access to the I-DEAS data for the extended enterprise via a web connection. And the I-DEAS Viewer provides the tools to view and interrogate I-DEAS parts and assemblies.

Traditionally, companies use drawings to communicate effectively with suppliers. But drawings cost significant time and resource, and are prone to errors. By eliminating drawings, your company can greatly streamline the product development process. I-DEAS Master Notation already provides a way to fully document designs in 3D. It provides Model Views to replace the use of 2D drawing views and Model View Folders to provide the organization what had been achieved with the use of drawings and sheets.

But, it's unreasonable to expect every data consumer in the supply chain to be licensed and trained to use I-DEAS. What you need is a simple, accessible product that makes it easy for anyone to view and interrogate fully documented 3D models.

The I-DEAS Viewer provides an elegant solution to this need. This comprehensive set of tools for interrogating models produced in I-DEAS has a simple and concise user interface, making interrogation of I-DEAS models quick and efficient. You don't need to know how to use I-DEAS to use the viewer. In fact, it's designed to be used by users with a wide range of backgrounds, such as:

- marketing and management
- suppliers and partners
- sales and distribution
- manufacturing and testing
- training and support



I-DEAS Viewer provides functions to control how you view the model and navigate the assembly structure.

Three Views of Data

I-DEAS Viewer provides three views of the I-DEAS product data:

- The Workspace provides a fully navigable, three-dimensional view of model data. You can interact with this view to create precise measurements, view cross sections, and add notes.

- The Workspace Explorer provides a tree view of assembly structure. Use the Workspace Explorer to select specific parts or subassemblies, and to hide and show various model components in the Workspace.

- The Properties panel allows you to access and view stored design groups, model views, configurations, and animations. You can also selectively hide and show annotations (such as dimensions and PMI) or geometric entities (such as wireframe, surfaces, or reference geometry)

View Control and Navigation

Provides functions to control how you view the model and navigate the assembly structure.

- **Standard views:** Use either menus or the toolbar to select standard views such as top, bottom, left, and right.
- **Dynamic viewing:** Use traditional I-DEAS function keys, icons (like in the I-DEAS Web Access (IWA) thumbnail viewer), or mouse buttons to dynamically pan, zoom, or rotate the model.
- **Dynamic highlighting:** Selectable entities are highlighted when your pointer passes over them, as in I-DEAS.
- **Assembly Hierarchy navigation:** Expand and collapse assemblies, highlight parts in the assembly, and search through the hierarchy for specific parts. The hierarchy can display part names, numbers, instance names, and versions.
- **Visibility control:** Control visibility for full parts and assemblies, as well as individual entity types (such as surfaces or PMI) for each part. For example, you can display one part as wireframe with no annotation and another as shaded with all annotation displayed.

I-DEAS Master Notation Support

Provides complete support to replace drawings in a company's process.

- **Annotation:** Display I-DEAS annotation while automatically keeping text readable during dynamic rotations of the model. You can select an annotation to highlight the associated geometry (and vice versa) for quick dimension and tolerance comprehension.
- **Model Views:** The model views for the selected item are displayed in a tree view. The stored model views are organized within view folders as defined in I-DEAS. Activating a model view changes the view direction, activates the view border, and displays only the appropriate annotation and geometry as specified in I-DEAS.

- **Groups:** Create displays that show only the groups defined in a model, or just highlight the members of a group.

- **I-DEAS Sequences and Configurations:** Change configurations and animate sequences defined for an assembly.

Interrogation and Collaboration Tools

Provides tools to interrogate the model for information not directly provided in the model's documentation as well as tools to collaborate with other viewers of the data.

- **Section:** Create cross sections in orthogonal planes as well as user-selected planes. The cross section dynamically updates as the plane is dragged or as the model animates through the plane. Optionally, display multiple planes simultaneously or in a separate 2D display.
- **Measure:** Precisely interrogate simple linear, angular, and radial measurements not already called out in the model annotation.
- **View and markup:** Track and manage issues by capturing snapshots of the model in a view and adding markup to the snapshot. Capture multiple snapshots and store in an I-DEAS viewer language file that can be associated to the part or assembly in IWA for future reference by other users.

Licensing

The I-DEAS Viewer can be licensed in three different ways, which can be deployed at your site individually or in combination:

- An I-DEAS Viewer provides a single node-locked license that allows use of the full viewer functionality without being attached to a network. This product is ideal for a small site or a large site with needs to support users without access to a central license server. The I-DEAS Viewer is available for purchase only through www.SDR4Me.com.
- An I-DEAS Viewer Package provides a bundle of 10 floating licenses that allow 10 concurrent users of the full functionality of the Viewer.
- A Publisher for the I-DEAS Viewer license is available on an annual basis only. This product allows you to package viewer files (consisting of I-DEAS data and a viewer license for those specific files) and distribute them to vendors, third-party suppliers, or other clients or stakeholders. They can then use a free, unlicensed viewer to examine the data you distribute.

Prerequisite

- I-DEAS Viewer requires a network card on the machine where it is installed.
- Publisher for the I-DEAS Viewer has the following prerequisite:

Core Modeler
-or-
I-DEAS Product Design Package
-or-
I-DEAS Artisan™ Package

Hardware

I-DEAS Viewer and Publisher for the I-DEAS Viewer are supported on the following operating systems:

Windows 95/98/NT
Sun Solaris
HP UX 11.X
SGI Irix

For More Information

For more information, contact your local SDR4 representative or call 1-800-848-7372.