

Products & Services  
Education  
Careers at SDRC

Investor Relations  
Solutions Partners  
Virtual Press Room

Customer Support  
About SDRC  
Contact SDRC

**SDRC**  
site map search

## SmartCAM Advanced Production Milling (TM)

*Generate CNC machine processes and code for 3-axis simultaneous machining with 4th and 5th axis positioning.*

SmartCAM® Advanced Production Milling offers an affordable solution for machining from designs that use solids data. SmartCAM Advanced Production Milling contains the ACIS solid modeling kernel, and supports the import and export of SAT or SAB solids data, and the import of IGES surface data. SmartCAM Advanced Production Milling includes the Machining From Solids tool box, surface edge extraction tools, and the shaded rendering functions described in SmartCAM FreeForm Machining. SmartCAM Advanced Production Milling software is the ideal solution for your fundamental 3D production needs. It supports 2- through 3-axis machining as well as 4- and 5-axis positioning. As the second tier in the SmartCAM® family of milling applications, it offers the functionality needed today, plus a simple, long-term growth path for your future needs. Like all SmartCAM applications, Advanced Production Milling is designed to help reduce your programming time and deliver your customer's parts quicker.

### **Ease Of Use**

SmartCAM Advanced Production Milling runs with the Microsoft Windows 95 and Windows NT operating systems. The Advanced Production Milling graphical user interface uses manufacturing terminology and logical operational sequences even first time users will find familiar, and experienced users can apply quickly.

### **Compatibility**

SmartCAM Advanced Production Milling takes design information from virtually any CAD system. IGES, DXF, VDA-FS, and DWG data translators turn design elements into part profiles properly sequenced for machining. I-DEAS Master Series and I-DEAS Artisan Series products can output surface data which can be directly imported into SmartCAM Advanced Production Milling.

### **Shorten Part Delivery Times**

SmartCAM Advanced Production Milling provides comprehensive roughing, finishing, pocketing, and drilling solutions which help you get jobs done faster and shorten part delivery times, including:

#### ***Surfacing Support***

You can generate toolpath for ruled, spun, lofted, form patch, Coons, and draft surfaces. Filleting tools help you connect surfaces with both constant and variable radius blends.

#### ***Fourth and Fifth Axis Support***

Get greater productivity with indexing head setups and fourth-axis rotary cutting.

#### ***Projection***

Project planar geometry onto, or offset from, any surface automatically.

#### ***Intuitive Pocketing***

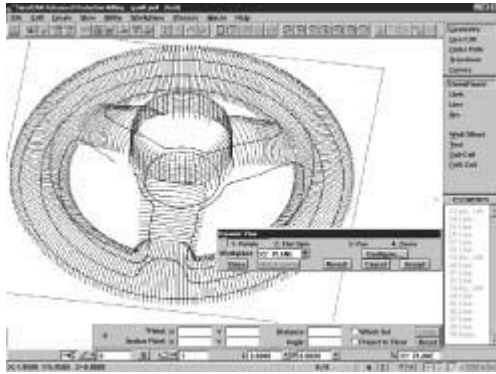
Select from spiral, linear or zigzag routines. Automatically calculate correct toolpath, recognizing multi-level islands and open profiles.

#### ***Gouge Correction***

Automatically check and correct your profiles for gouging.

#### ***Intelligent Drilling***

Automatically create drilling codes based on the parameters of the tool chosen.



SmartCAM Production Milling software

## Save Time And Money

- Subroutine support saves you time on repetitive shapes and operations.
- Automatic Toolpath Optimization sorts through toolpath solutions to find the shortest machine cycle time.
- Macro Productivity Tools automate commonly used machining functions to make your work faster and easier.

## Eliminate Surprises

Visual verification capabilities improve product quality and save you machine time and material costs.

- ShowCut software provides shaded volumetric simulation of the machining process that shows you how your material will be cut before you put it on the machine.
- Dimensioning and notes capabilities help with shop floor documentation.
- Custom tool graphics help you visualize special tools as well as the standard ball, bull-nosed, and square tools supported by the software.

## Capture Your Manufacturing Expertise

- **Job Operation Planner**

The Job Operation Planner is a unique SmartCAM function which helps organize and store tooling and machining operations information so you can capture proven machining methods and reuse them.

- Customization Many features of the SmartCAM applications - from the user interface to the way code is output - can be customized to streamline your work. SmartCAM applications put you, not the computer, in control.

## Wire EDM Capabilities

Included with SmartCAM Production Milling is SmartCAM Advanced Wire EDM software which provides wirepath for both 2- and 4-axis wire EDM machines. Included are comprehensive cutting solutions which help you get jobs done faster and shorten part delivery times, including:

- Wirepath creation and editing functions enable you to create and edit complex part profiles and create machine-ready CNC wirepath.
- True 4-axis surface offset is maintained regardless of the wire taper angle.
- No core cutting allows unattended roughing operation.
- Windows multi-tasking capabilities let you move between applications without quitting programs. You can also access and exchange information over a network.
- Verify before you cut. The model will show you both wirepath and "as cut" surfaces.
- Custom tool graphics help you visualize special setups. For example, you may create graphics for the wire which include upper and lower guides.

## EDM Functionality Save Time

SmartCAM Advanced Wire EDM offers a range of time-saving solutions, including:

- Automatic glue stops
- Dimensioning
- Gears
- Roughing & skim passes

- Simplified taper cutting
- Subroutine support
- Z-level support

### **The SmartCAM Production Milling Advantage**

SDRC products give you maximum return on your CAM, CAD, CAE, or PDM investment. As your business grows, you have the opportunity to add fully integrated software that will help you maintain your competitive advantage. Whether you want only CAD/CAM support or a full range of testing, analysis, and integrated data management solutions, SDRC can help you reach increasing levels of productivity faster.

### **Production Milling System Requirements**

#### **Windows**

##### Computer

- Minimum 486DX
- Recommended Pentium

##### Operating System

- Windows 95 or Windows NT

##### Physical RAM

- Minimum 16 Mb
- Recommended 32 Mb

##### Swap Space

- Minimum 24 Mb
- Recommended 48 Mb of permanent swap space

##### Hard Disk Space 25 Mb for installation

##### Other Devices CD-ROM Drive

I-DEAS, I-DEAS Master Series, I-DEAS Artisan Series, SmartCAM Advanced Production Milling, SmartCAM Advanced Wire EDM, and ShowCut are trademarks, and SDRC and SmartCAM are registered trademarks of Structural Dynamics Research Corporation. All other trademarks or registered trademarks belong to their respective holders.

For more information, contact your local SDRC representative, call 1-800-848-7372, or visit our website at: [www.sdrc.com](http://www.sdrc.com)

---

[Products & Services](#) | [Investor Relations](#) | [Customer Support](#)  
[Education](#) | [Solutions Partners](#) | [About SDRC](#)  
[Careers at SDRC](#) | [Virtual Press Room](#) | [Contact SDRC](#)  
[Home](#) | [Site Map](#) | [Search](#)

© 1999 Structural Dynamics Research Corporation  
[Privacy Statement](#)