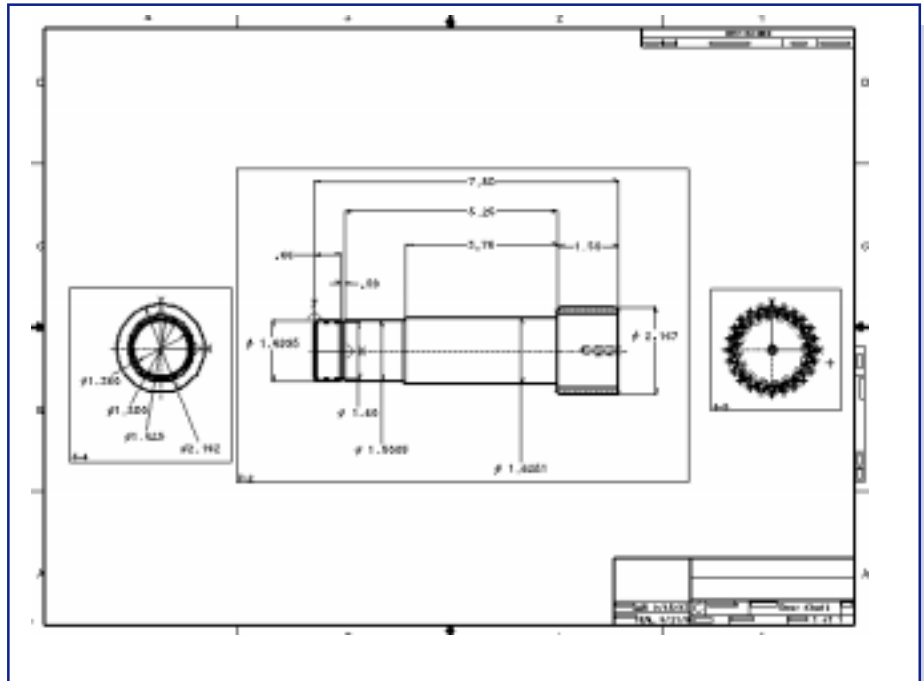


To move drafting and design data between I-DEAS® and CADAM, SDRC offers data translator software for exchanging designs between the CADAM NURESTOR format and I-DEAS Master Drafting™. The I-DEAS Data Translator provides complete, accurate, and rapid bi-directional data translation between I-DEAS Master Drafting and Mainframe CADAM, PROFESSIONAL CADAM, MICRO CADAM, Cadra, and other products that support the CADAM NURESTOR format.

Usage Scenarios

The translator is used in the following situations:

- Migration: Companies migrating from CADAM to I-DEAS as their core design tool can move all existing drawings into I-DEAS Master Drafting. Drawings retain all intelligence in the I-DEAS system that had existed in the CADAM system where the drawings were originally created. Because the translator functions without the need for CADAM, this data exchange can take place after the mainframe hardware platforms have been removed from the engineering site.
- Growth to 3D: Many CADAM users view I-DEAS as an approach to expand their capabilities in 3D design. Geometry transferred to I-DEAS software can be easily used to create solid models and analysis models of the existing designs. These solid models can be created without retracing geometry or without the need to constrain geometry.
- Complement: Companies desiring to complement their existing CADAM system with I-DEAS can use the bi-directional feature of the translator. Companies using I-DEAS can exchange data with supplier companies that may still be using one of the CADAM products.



Original CADAM drawing.

Bi-Directional Exchange

The translator accurately exchanges data between CADAM NURESTOR and I-DEAS Master Drafting databases. The translator creates complete drawings in either direction of conversion. Additionally, the translator supports special CADAM entity types, like Detail Pages, Special Symbols, and Reference Entities. The translator handles the following CADAM entities:

- Points
- Lines
- Circles
- Ellipses
- Splines
- Dittos
- Detail Pages
- Notes, including CADAM special characters

- Area fills
- Graphic Attributes, including STYLE, STYLE 2, WIDTHS
- Overlays
- Dimensions
- Auxiliary views, including orthographic, isometric, and true views
- Symbols, including arrows, triangles, deltas, balloons, section lines, rectangles, text lines
- Special symbols, including user-defined symbol tables
- Plot Formats

The translator also handles Japanese Kanji characters in both directions of translation.

CADAM Versions Supported

The translator bi-directionally supports complete drawings for Mainframe CADAM Release 21 through Version 3 Release 2.

Additionally, the translator imports complete drawings from Mainframe CADAM Release 19.2 through Release 20 into I-DEAS Master Drafting.

User Interface

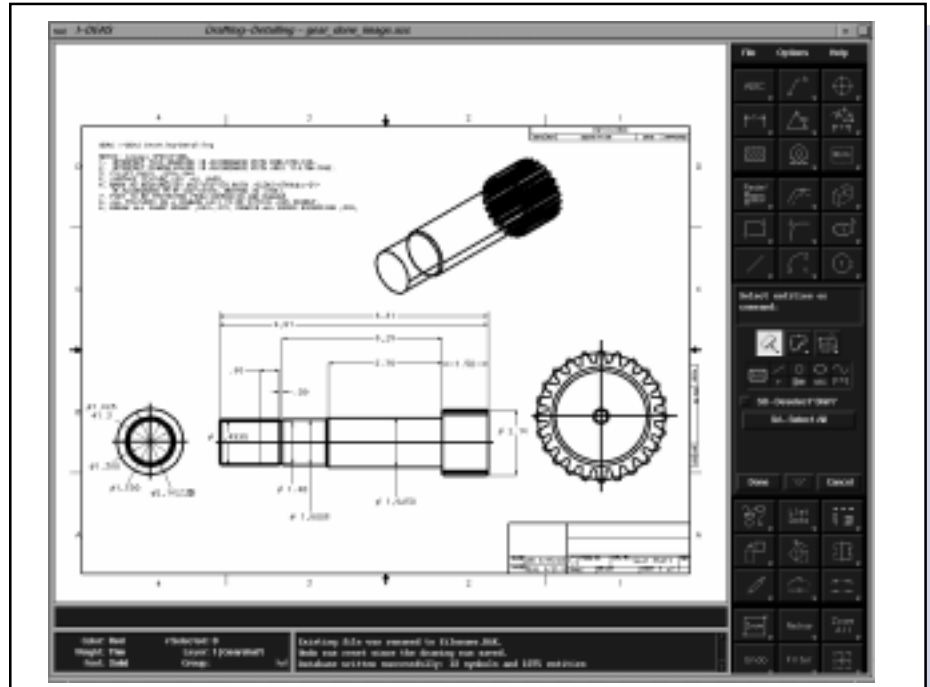
The translator provides both a forms-based and command-line user interface that operates in the I-DEAS environment. The forms-based version operates from within I-DEAS Master Drafting software or from the operating system command line. It provides a scrolling list region for easy selection of CADAM NURESTOR databases for translation. The command-line user interface provides a simple, straightforward method of invoking the translator and can be used to translate multiple drawings unattended. The user interface options provide both interactive and batch translation capability, and run on workstations with no installation required on the mainframe.

Prerequisite

I-DEAS Master Drafting

For More information

For more information, contact your local SDRC representative or call 1-800-848-7372.



After translation into I-DEAS Master Drafting (above) where additional drafting has been done—in this case, the CADAM data was used to create the solid shown below with the I-DEAS Master Modeler™ software.

